



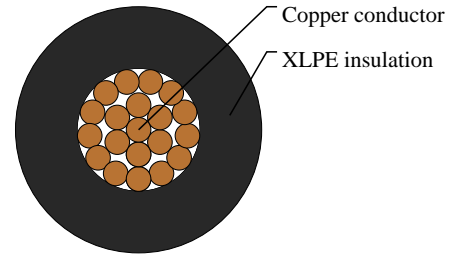
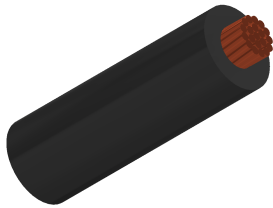
Caledonian

Automotive Cables

www.caledonian-cables.com

marketing@caledonian-cables.com

AEXF 1C0.5



APPLICATIONS

This XLPE insulated single-core cable is used in low voltage circuits in automobiles(vehicles and motorcycles)

STANDARDS

JASO D611

CABLE CONSTRUCTION

Conductor: Annealed stranded copper

Insulation: Cross-linked Polyethylene (XLPE) or Polyvinyl Chloride

Standard Compliance: JASO D611

PHYSICAL AND THERMAL PROPERTIES

Operating temperature: -40 °C to +120 °C

DIMENSION AND PARAMETERS

No. of Cores × Cross-sectional Area	No. and Dia. of Wires	Diameter of Conductor (max.)	Nominal Insulation Thickness	Overall Diameter (min.)	Overall Diameter (max.)	Approx. Weight	Electrical Resistance at 20°C (max.)
No. × mm ²	no./mm	mm	mm	mm	mm	kg/km	MΩ/m
1x0.5	20/0.18	1.0	0.5	1.9	2.0	8.0	36.7